

Watertight Male Plug

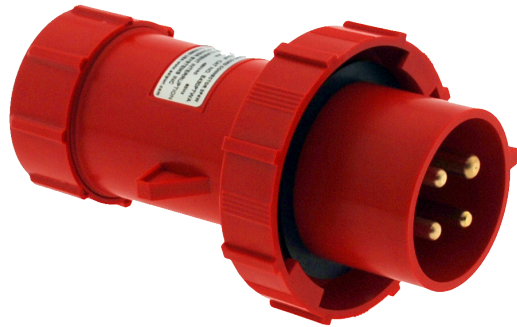
30A 480VAC

(30A 380/440VAC 7h per IEC 60309-1 & -2)

Catalog No: E430P7WA

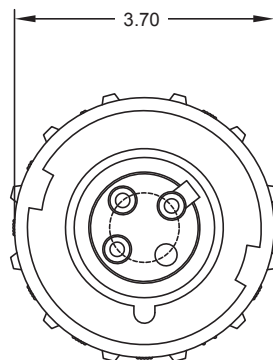
Item No: 1800-08PA

Features

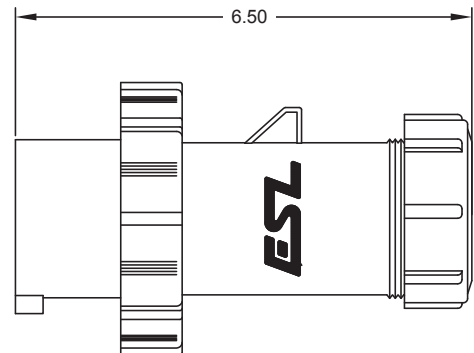


- UL Listed pin and sleeve male plug
- Heavy duty watertight design for marine environment
- One termination set screw per pole in backloaded contact carrier for easy assembly
- Self-sealing cable grommet provides easy install, strain relief and ensures watertight seal

Drawing



FRONT VIEW



RIGHT SIDE VIEW

Approvals

- UL & cUL Listed

Specifications

Catalog No: E430P7WA
Item No: 1800-08PA

Ratings

Electrical	30A 480VAC pin & sleeve (380/440VAC 50/60 Hz) 3 phase 3 wire + ground, 7h per IEC 60309-1 & -2
Cable range	0.5 - 0.875in (13 - 22mm) diameter with installed grommet
Environmental	Watertight
Terminals	(3) Phase & (1) ground pressure type M6 screw terminals (1 per pole) accept #12-#8 AWG (2.5-10mm ²) conductors

Materials

Polyamide	Body, lock ring, gland ring, inner sleeve
Phenolic	Contact carrier
Brass	Contact pins
Polychloroprene	Gaskets
Buna-N (Nitrile/NBR)	O-rings
Polyamide base, silicone seal	Grommet

Packaging

Approx. product weight	1.3 lbs. (ea)
Approx. shipping weight	13 lbs. (carton of 10)
Approx. shipping dimensions	17in x 8in x 8in (carton of 10)