

Stainless Steel Single Gang

30A 240VAC

Catalog No: E1-R30-240-50-65SC-SPL

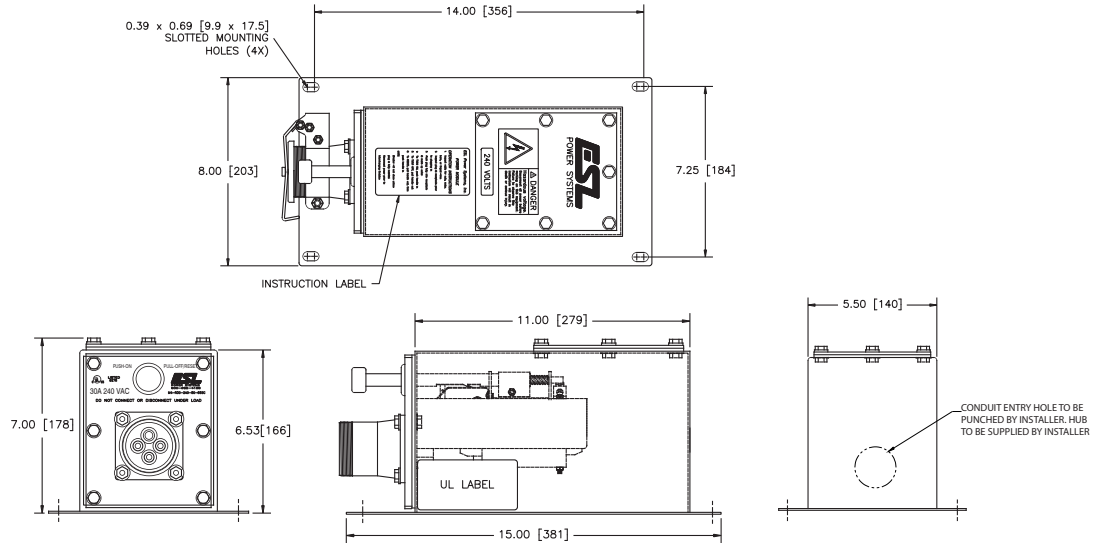
Item No: 2203-22MW

Features



- UL Listed 1-gang assembly complete with UL Listed safety-interlocked module containing an integral 50A circuit breaker
- Type 4X enclosure manufactured from 14GA seam-welded stainless steel powder-coated texture gray (RAL7038)
- Factory installed safety-interlocked ESL module #1700-34A
- UL Listed circuit breaker rated 65kAIC @ 240VAC provides short circuit & overcurrent protection
- Actuator rods allows user to turn on/off and reset tripped breaker
- Universal mounting – requires (4) fasteners
- Gasketed bolt-on access cover

Drawing



Approvals

- UL/cUL Listed module and assembly
- UL 489 Listed / CSA certified molded case circuit breaker

Specifications

Catalog No: E1-R30-240-50-65SC-SPL
 Item No: 2203-22MW

Ratings

| | |
|-----------------|--|
| Receptacle | 30A 240VAC, 3 phase 3 wire + ground |
| Circuit breaker | 50A trip, 65,000AIC @ 240VAC, other trip and AIC ratings available - contact factory |
| Environmental | Type 4X/IP66 |
| Terminals | Installer wires direct to circuit breaker: (3) phase & (1) ground pressure type screw terminals, Phases: #10 - 1/0 (4-50mm ²) wire range, Ground: #14 - #2 AWG (2-33mm ²) wire range |

Materials

| | |
|----------------------|--|
| Stainless steel | Enclosure, access cover, module frame, on/off rod, interlock mechanism, contact terminal screws & spring, receptacle housing, snap cover and all fasteners |
| Nickel plated brass | Contact sleeves |
| Rynite® | Receptacle insert |
| Buna-N (Nitrile/NBR) | O-rings, gaskets, snap cover seal |

Packaging

| | |
|-----------------|---------|
| Product weight | 16 lbs. |
| Shipping weight | 17 lbs. |

Replacement

Parts

| Description | Item No. | Description | Item No. |
|--|----------|---------------------|----------|
| Safety-interlocked power module | 1700-34A | Circuit breaker kit | 4020-06 |
| Stainless steel snap cover assembly | 1500-16L | Ground sleeve kit | 4016-06 |
| Replacement complete housing with insert, contact sleeve & ground assembly | 4010-22 | Phase sleeve kit | 4015-02 |