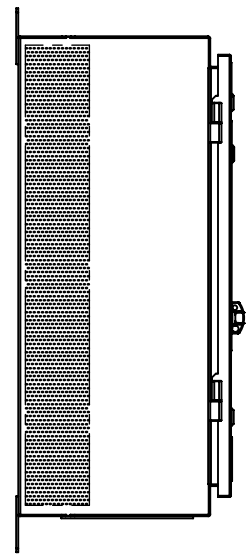
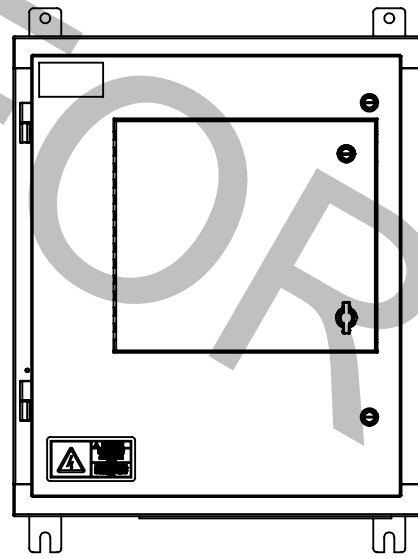


D

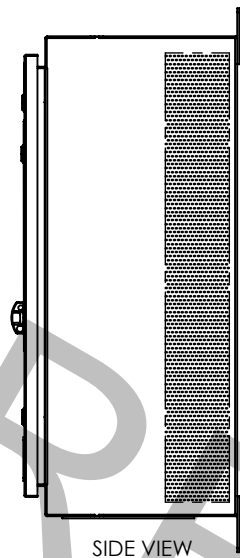
D



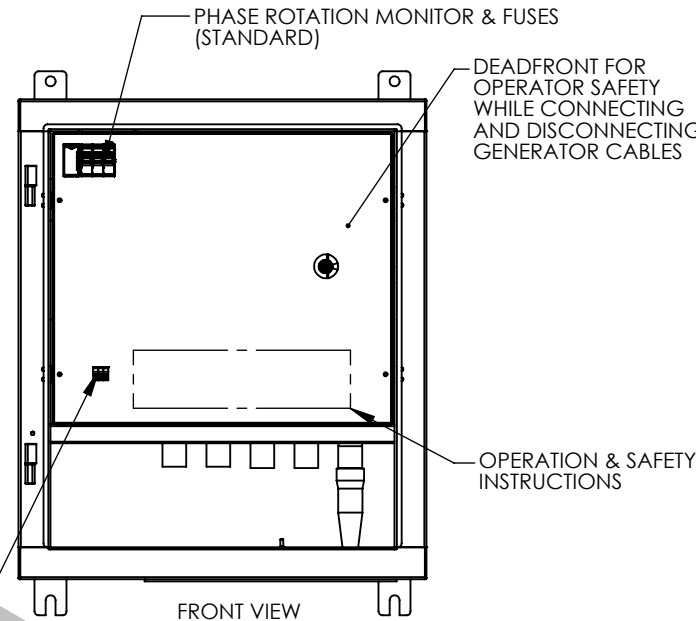
SIDE VIEW



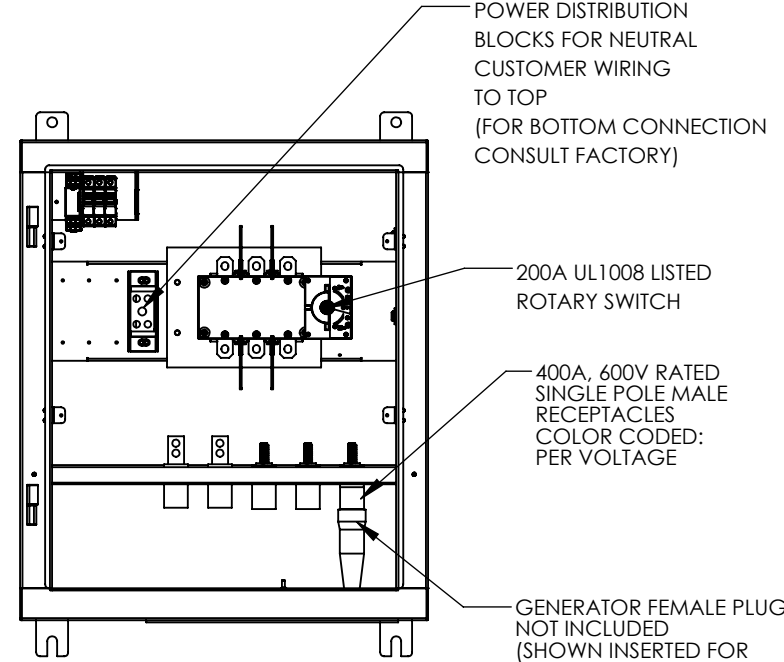
FRONT VIEW
(HANDLE COVER NOT SHOWN)



SIDE VIEW



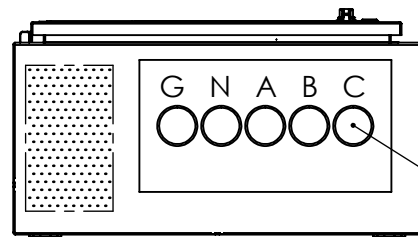
FRONT VIEW
(DOOR REMOVED)



FRONT VIEW
(DOOR AND DEADFRONT REMOVED)

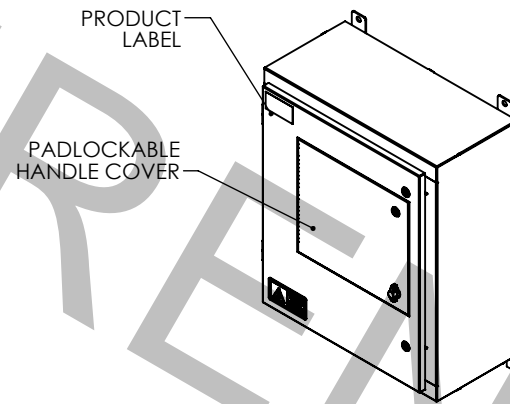
C

C



BOTTOM VIEW

HINGED INTERNAL PROTECTIVE
COVER FOR WIRE OPENING



PRODUCT LABEL

PADLOCKABLE
HANDLE COVER



B


B

A

A

ASSEMBLY NOTES

- COMPLETE ASSEMBLY IS UL LISTED AS A MANUAL TRANSFER SWITCH UNDER UL 1008 (TRANSFER SWITCH STANDARD)
- FINISH POWDER COATED SERIES W49. SEE TITLE BLOCK FOR COLOR.
- STANDARD UNIT IS NON-SWITCHED NEUTRAL. FOR SWITCHED NEUTRAL PLEASE CONSULT FACTORY.
- NOT FOR INDOOR USE
- TYPE 3R CONSTRUCTION
- OPTIONAL PLUG KITS AVAILABLE
- CONDUIT ENTRY AREA SHOWN SHADED
- FOR AVAILABLE ACCESSORIES & OPTIONS SEE SPEC SHEET**
- FOR SINGLE LINE VISIT WWW.ESLPWR.COM**

REV.	CP BY	DATE	FOR REFERENCE DESCRIPTION	
0	CP	2/10/23		
MODEL ID: 8302-SERIES			UNLESS OTHERWISE SPECIFIED: DIMENSIONS ARE IN INCHES TOLERANCES: DECIMALS .x ±.03 .XX ±.01 .XXX ±.005 ANGULAR ±1/2°	 <p>CORONA, CALIFORNIA International: (951) 739-7000 Phone: (800) 922-4188 eslpwr.com info@eslpwr.com</p>
SCHEMATIC				
THICKNESS 14GA			BREAK ALL SHARP EDGES .005 - .010	ESL ROTARYCONNECT ENCLOSURE RATED 200A
MATERIAL				
FINISH WRINKLE GRAY (RAL 7035)			DO NOT SCALE	DWG NO. 8302-SERIES
REFERENCE			PROPRIETARY	REV. 0
			THIS DOCUMENT AND THE DATA DISCLOSED HEREIN OR WHEREWITH IS NOT TO BE REPRODUCED, USED OR DISCLOSED IN WHOLE OR IN PART TO ANYONE WITHOUT THE PERMISSION OF ESL.	
			EST. WEIGHT: 115 LBS.	SHEET 1 of 1