

D

C

B

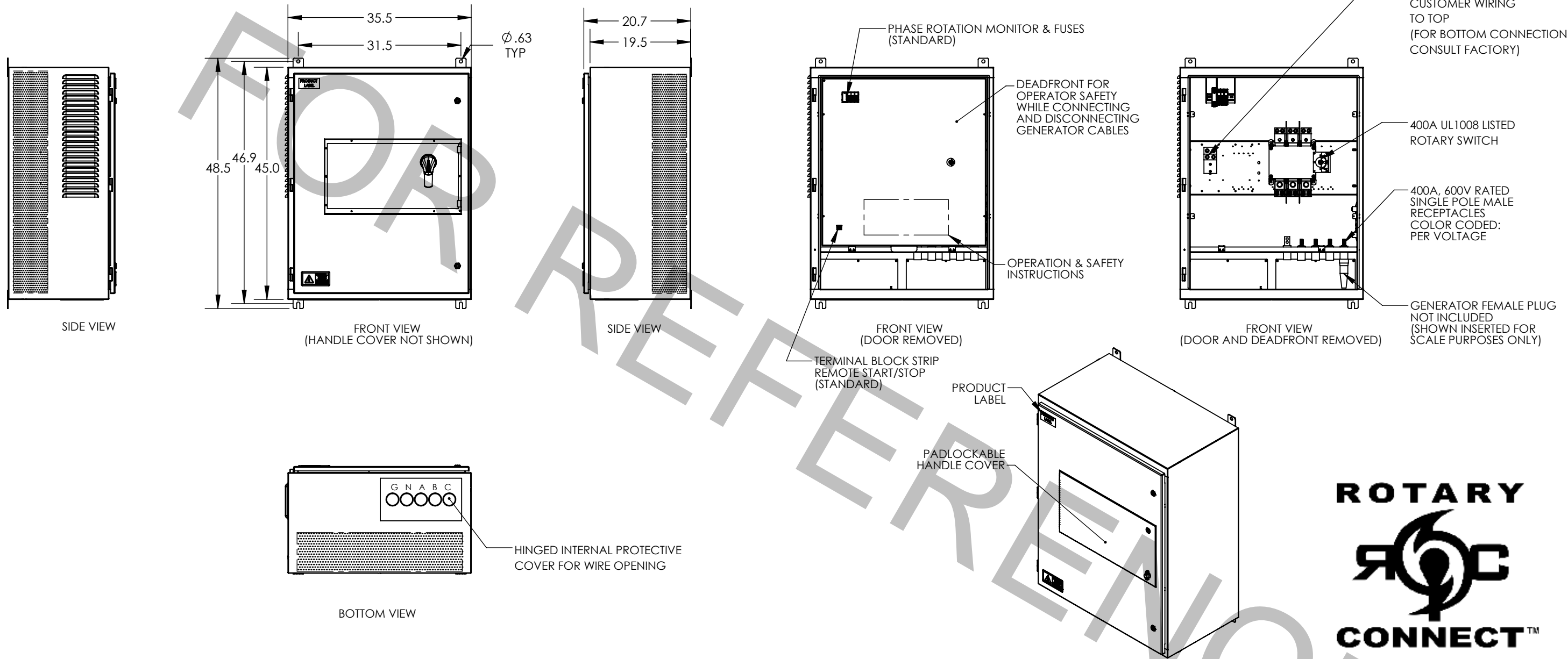
A

D

C


B

A



**ASSEMBLY NOTES**

- COMPLETE ASSEMBLY IS UL LISTED AS A MANUAL TRANSFER SWITCH UNDER UL 1008 (TRANSFER SWITCH STANDARD)
- FINISH POWDER COATED SERIES W49. SEE TITLE BLOCK FOR COLOR.
- STANDARD UNIT IS NON-SWITCHED NEUTRAL. FOR SWITCHED NEUTRAL PLEASE CONSULT FACTORY.
- NOT FOR INDOOR USE
- TYPE 3R CONSTRUCTION
- OPTIONAL PLUG KITS AVAILABLE
- CONDUIT ENTRY AREA SHOWN SHADED
- FOR AVAILABLE ACCESSORIES & OPTIONS SEE SPEC SHEET**
- FOR SINGLE LINE VISIT WWW.ESLPWR.COM**

0	CP	2/10/23	FOR REFERENCE	
REV.	BY	DATE	DESCRIPTION	
<b>MODEL ID:</b>	8304-SERIES		UNLESS OTHERWISE SPECIFIED: DIMENSIONS ARE IN INCHES TOLERANCES: <b>DECIMALS</b> .x ±.03 .XX ±.01 .XXX ±.005 <b>ANGULAR</b> ±1/2°	 CORONA, CALIFORNIA International: (951) 739-7000 Phone: (800) 922-4188 eslpwr.com info@eslpwr.com
<b>SCHEMATIC</b>				
<b>THICKNESS</b>	12GA		BREAK ALL SHARP EDGES .005 - .010 <b>DO NOT SCALE</b>	ESL ROTARYCONNECT ENCLOSURE RATED 400A
<b>MATERIAL</b>	STEEL			
<b>FINISH</b>	WRINKLE GRAY (RAL 7035)		<b>PROPRIETARY</b> THIS DOCUMENT AND THE DATA DISCLOSED HEREIN OR WHEREWITH IS NOT TO BE REPRODUCED, USED OR DISCLOSED IN WHOLE OR IN PART TO ANYONE WITHOUT THE PERMISSION OF ESL.	<b>DWG NO.</b> 8304-SERIES
<b>REFERENCE</b>				<b>EST. WEIGHT:</b> 380 lbs.